

FULL BAND PARABOLIC

WIDER FREQUENCY RANGE, PERFORMANCE AND EXCELLENCE

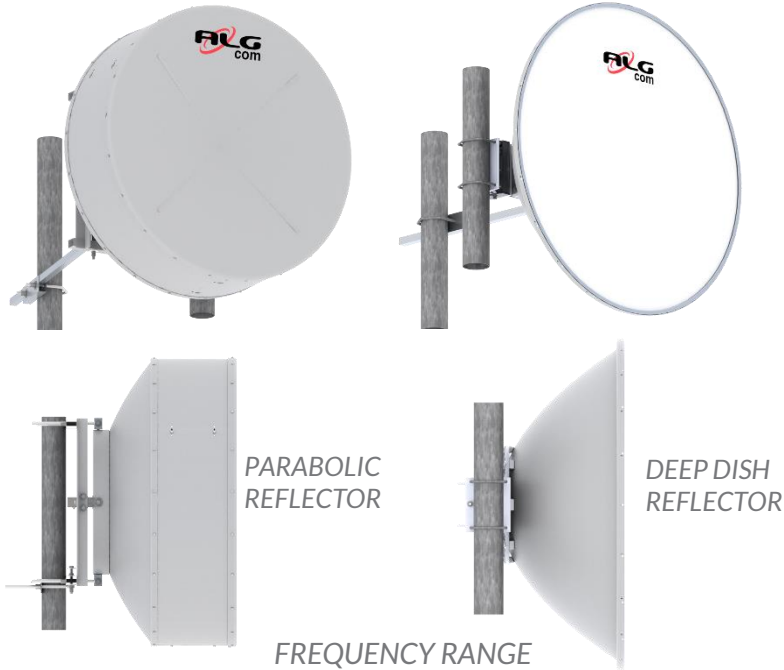
COMPARATIVE Ø4ft

DISCONTINUED

Shielded Parabolic
PS-5800-34-12-DP
PS-6100-35-12-DP

NEW

Full Band Parabolic
UHP-5800-35-12-DP



PS-5800: 5,25 – 5,875 GHz
PS-6100: 5,50 – 6,425 GHz

4,9 – 6,425 GHz

GAIN

35 dBi

35 dBi

FRONT-TO-BACK RATIO

PS-5800: 57 dBi
PS-6100: 54 dBi

57 dB

WEIGHT

29,5 kg

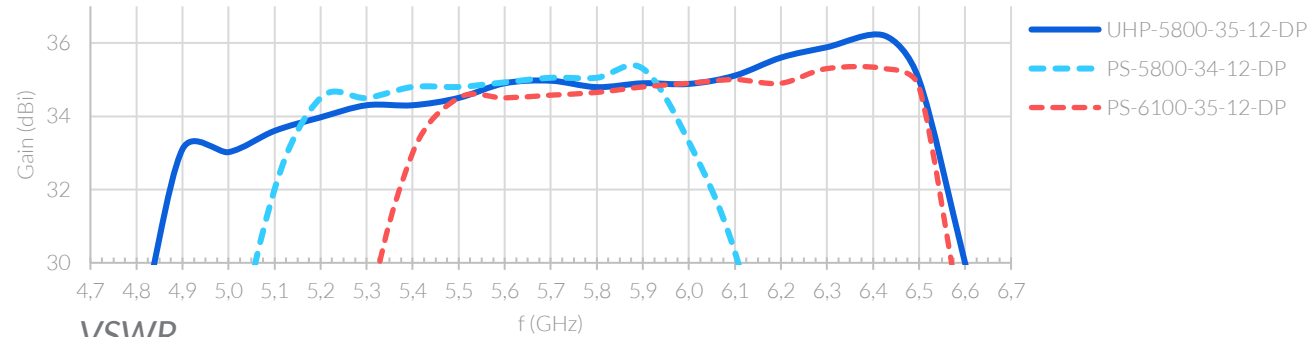
25,0 kg



WHAT WAS IMPROVED?

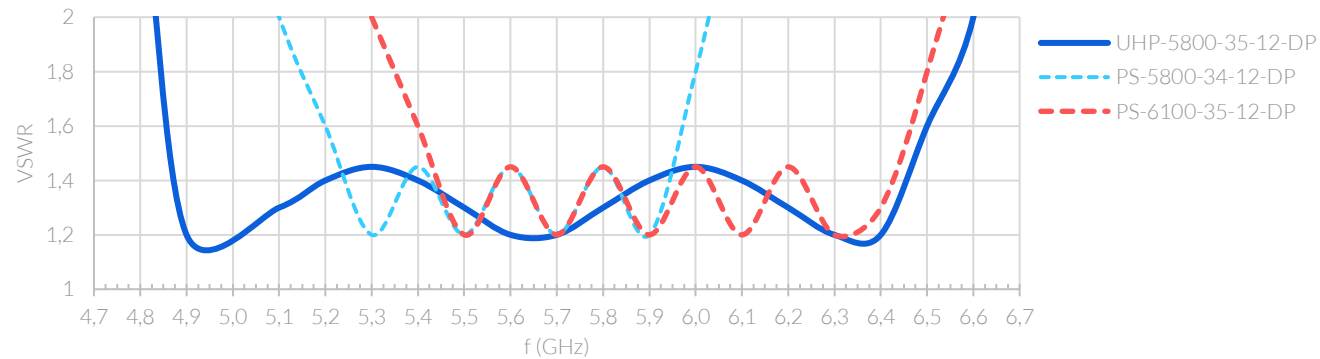
GAIN

High and stable, as before, but in a much larger bandwidth.



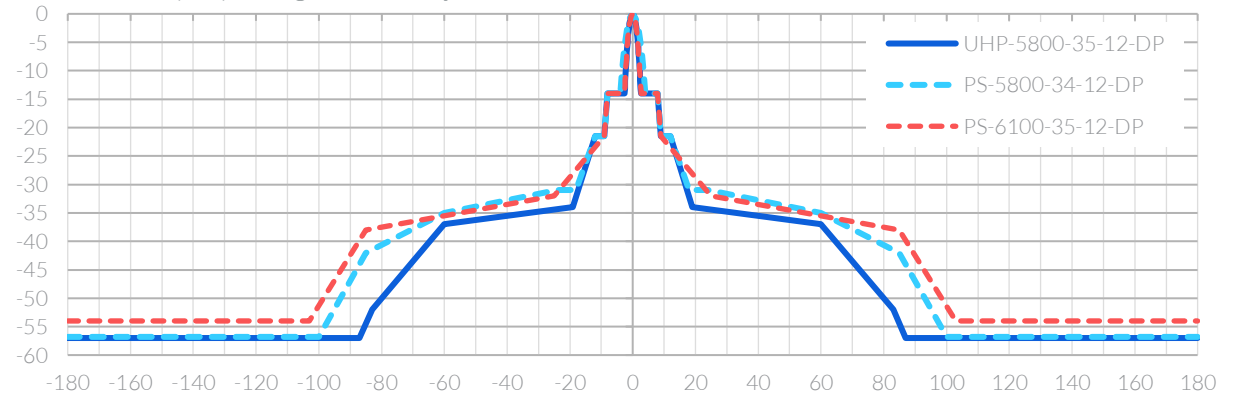
VSWR

Same ALGcom quality standard covering more spectrum.



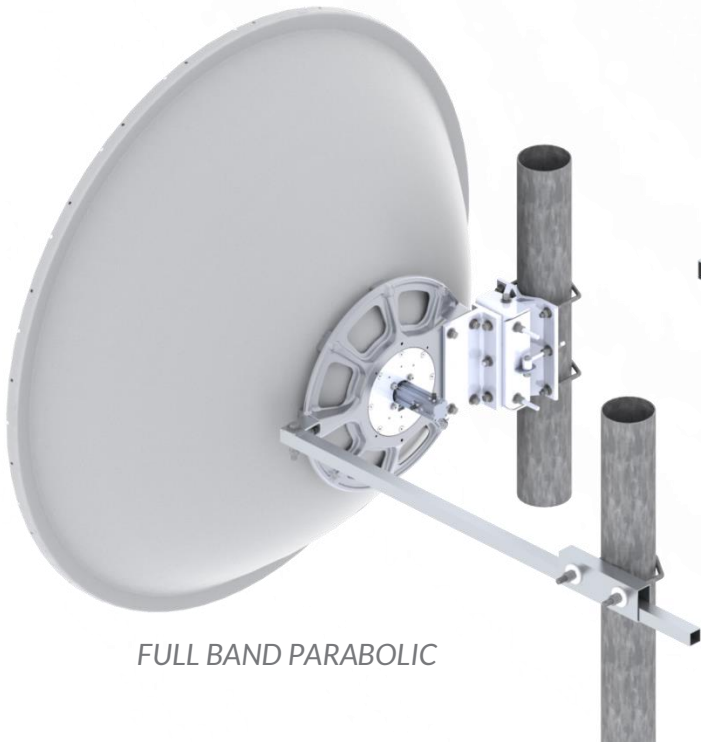
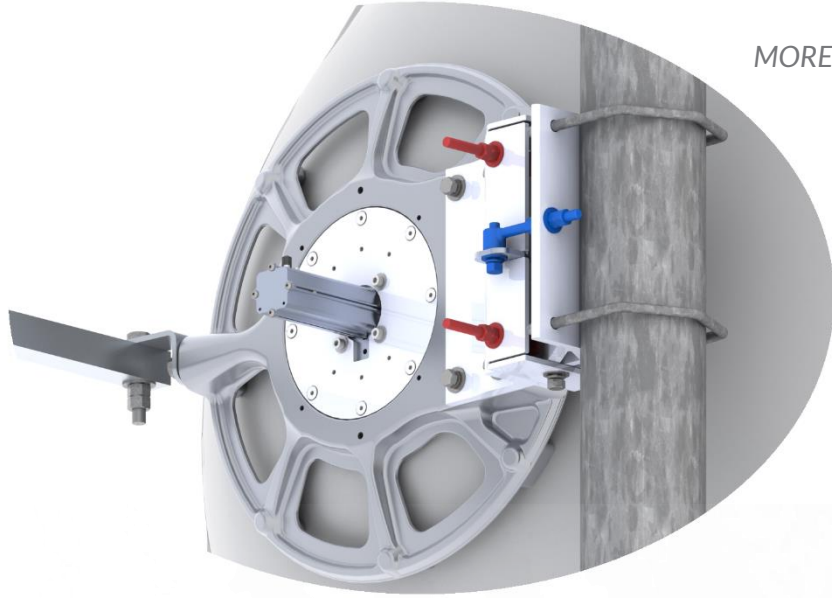
RADIATION PATTERN

Constantly improving the noise rejection.



NEW MOUNTING HARDWARE
EVEN EASIER TO INSTALL

MORE PRECISE TO ADJUST **TILT** AND **AZIMUTH**



FULL BAND PARABOLIC



INTUITIVE TO MOUNT

