

FULL BAND PARABOLIC

WIDER FREQUENCY RANGE, PERFORMANCE AND EXCELLENCE

COMPARATIVE Ø2ft

DISCONTINUED

Shielded Parabolic
PS-5800-29-06-DP
PS-6100-30-06-DP

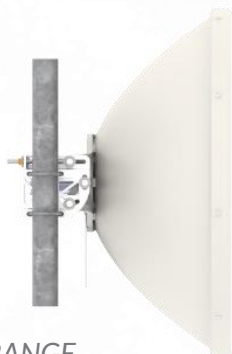


NEW

Full Band Parabolic
UHP-5800-29-06-DP



PARABOLIC REFLECTOR



DEEP DISH REFLECTOR

FREQUENCY RANGE

PS-5800: 5,25 – 5,875 GHz
PS-6100: 5,50 – 6,425 GHz

4,9 – 6,425 GHz

GAIN

30 dBi

30 dBi

FRONT-TO-BACK RATIO

48 dB

50 dB

WEIGHT

7,2 kg

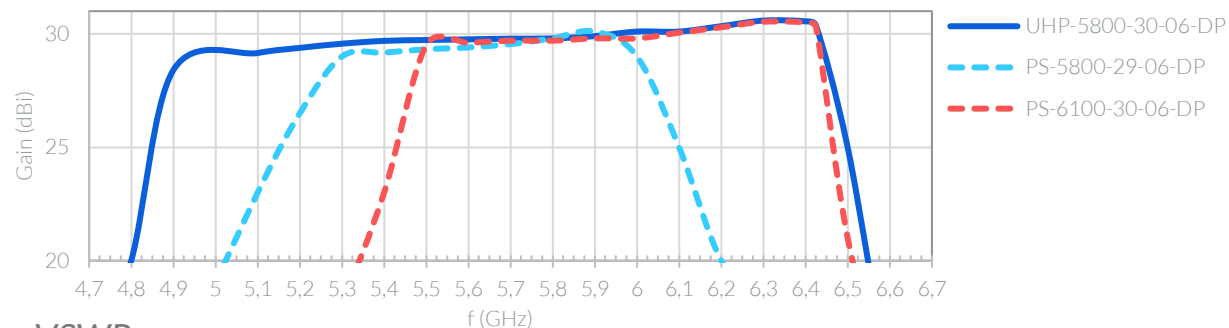
6,0 kg



WHAT WAS IMPROVED?

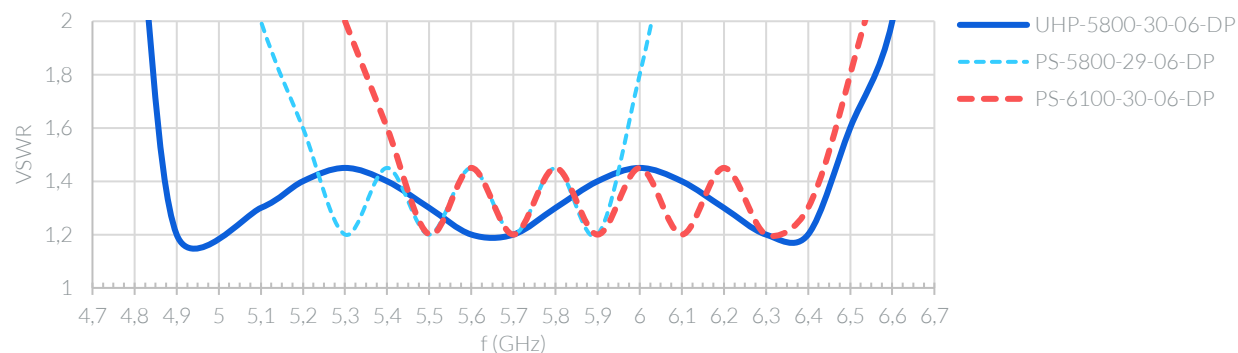
GAIN

High and stable, as before, but in a much larger bandwidth.



VSWR

Same ALGcom quality standard covering more spectrum.



RADIATION PATTERN

Constantly improving the noise rejection.

