

FULL BAND PARABOLIC

WIDER FREQUENCY RANGE, PERFORMANCE AND EXCELLENCE

COMPARATIVE Ø3ft

DISCONTINUED

Shielded Parabolic
PS-5800-32-09-DP
PS-6100-33-09-DP



NEW

Full Band Parabolic
UHP-5800-32-09-DP



PARABOLIC REFLECTOR



DEEP DISH REFLECTOR

FREQUENCY RANGE

PS-5800: 5,25 – 5,875 GHz
PS-6100: 5,50 – 6,425 GHz

4,9 – 6,425 GHz

GAIN

33 dBi

33 dBi

FRONT-TO-BACK RATIO

54 dB

55 dB

WEIGHT

20,5 kg

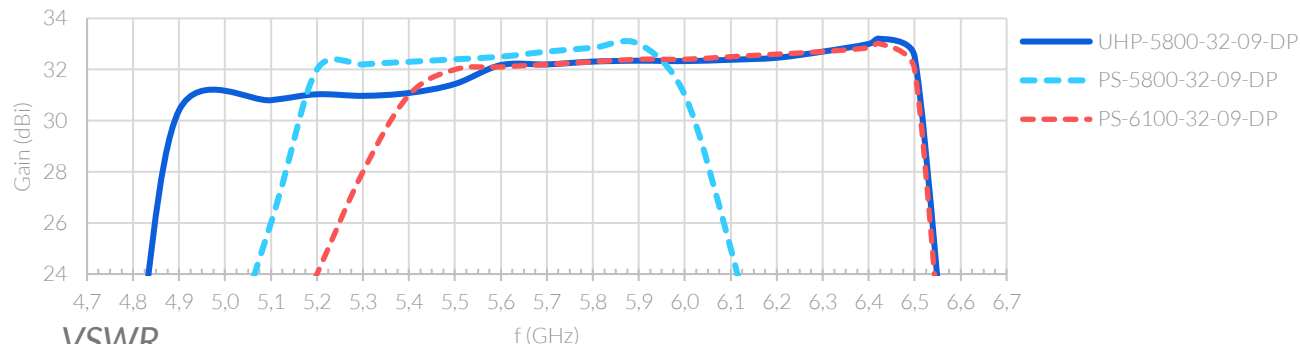
15,5 kg



WHAT WAS IMPROVED?

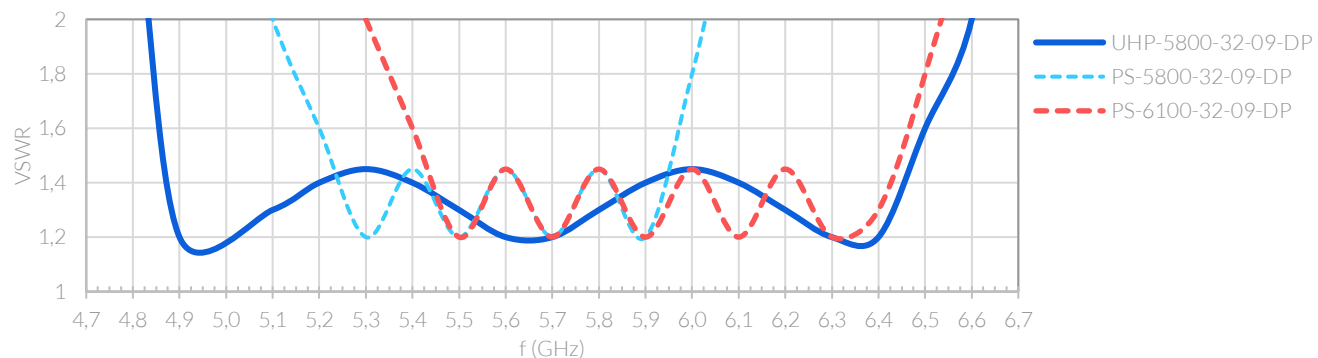
GAIN

High and stable, as before, but in a much larger bandwidth.



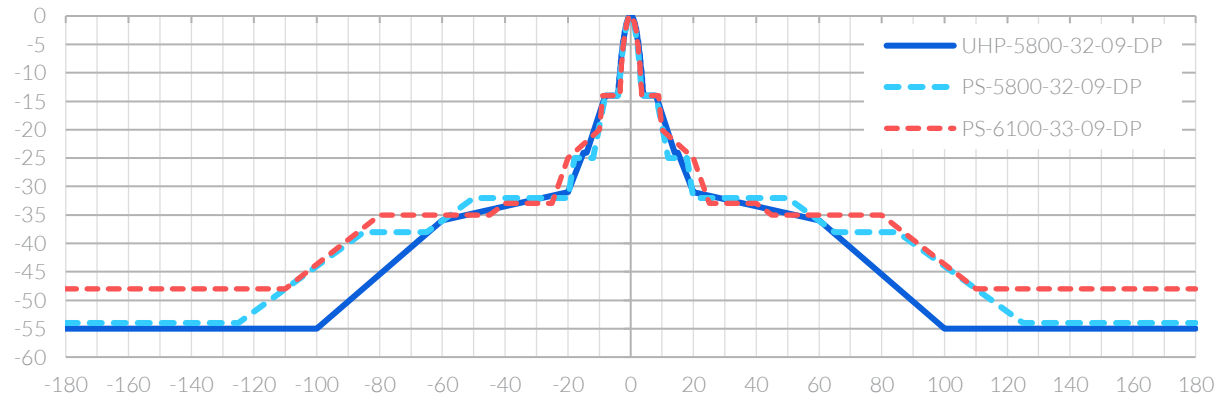
VSWR

Same ALGcom quality standard covering more spectrum.

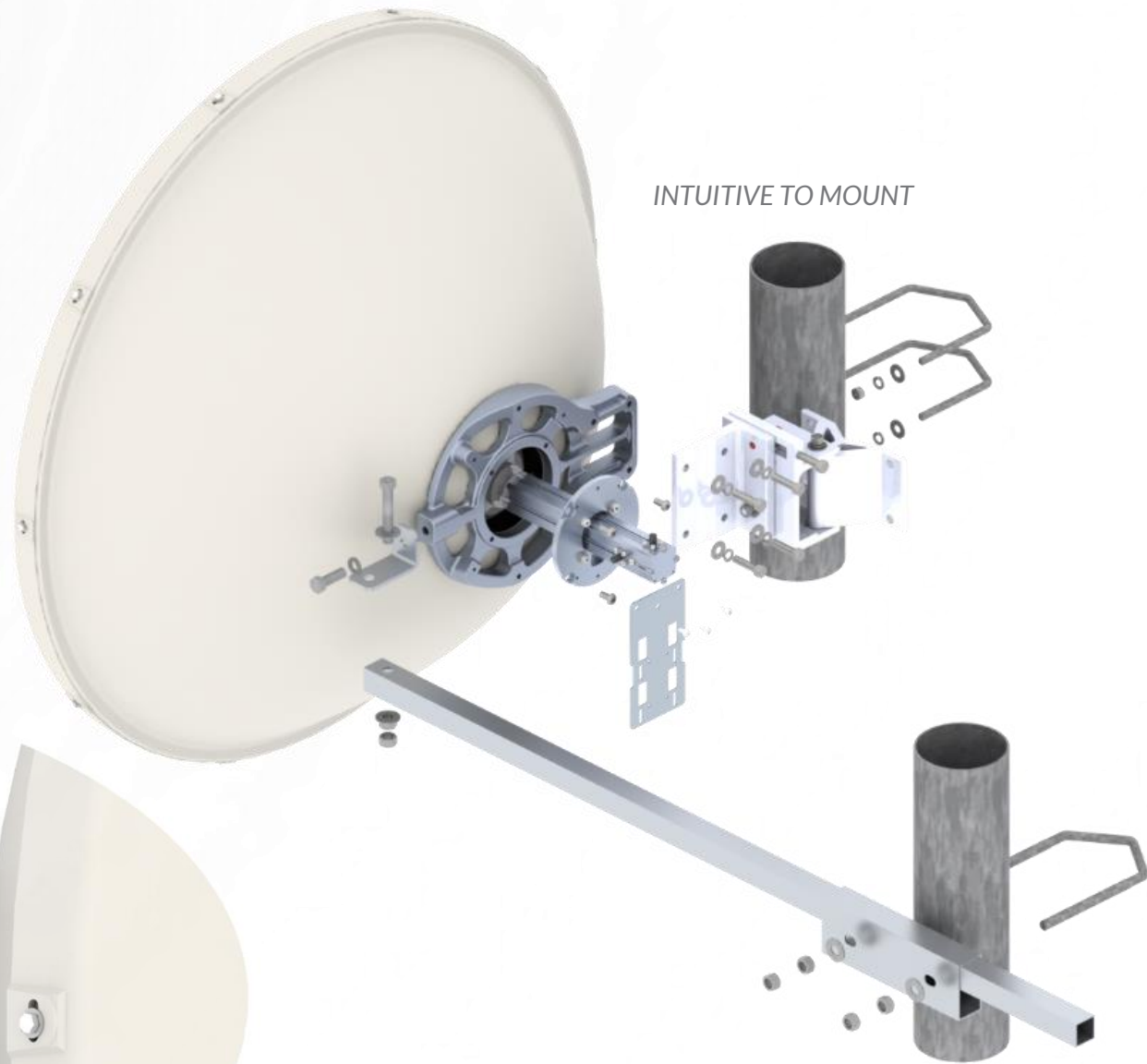
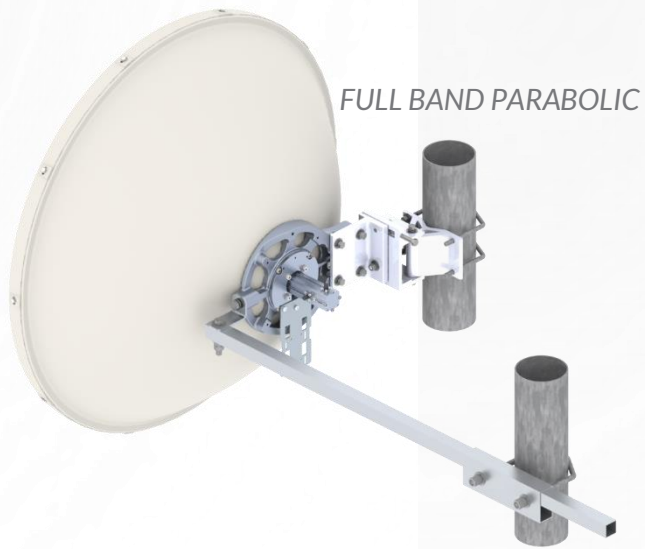


RADIATION PATTERN

Constantly improving the noise rejection.



NEW MOUNTING HARDWARE
EVEN EASIER TO INSTALL



MORE PRECISE TO ADJUST **TILT** AND **AZIMUTH**

